

Get Cracking!

LEADLIGHT PRODUCTS NZ BI MONTHLY NEWSLETTER

ISSUE 9, FEBRUARY/MARCH 2005

Glass Art Competition!!

Get your entries in now for this inaugural competition!! It is a great opportunity to get your glass art work noticed and check out what other hobbyists are doing. Entries opened 1st January and we have already received a few - BUT NOT ENOUGH! That is why we have included an entry form with this issue of **Get Cracking**. So don't be afraid to enter your work, if you don't have access to a camera bring your

art work into Leadlight Products Hamilton or Glassworks Palmerston North and we will take a photo for you and get it printed! So come on and get your creative caps on and enter into either the leadlight, glass mosaic, copperfoil suncatchers, lampshades, kiln fired glass and glass stepping stones categories. Remember that every category has two winners! Entries close 31st March 2005.

RETURN TO KEEP ON...

Keep On Leadlighting is back in full swing in Hamilton with Di returning to a full schedule of tutoring, and Michelle ready and waiting for enrolments in Palmerston North. To create truly awesome leadlights and lampshades with a professional quality finish you can do no better than to learn under the guidance of Di or Michelle. Leadlight Products is fortunate to have two such talented tutors with a wealth of experience. Both have spent many years working and teaching in studios in Melbourne, but both being kiwis at heart have returned home to share their love of glass.

During a Keep On Leadlighting course you can expect individual attention based on your needs and that of your project. Di says "There is a firm focus on pattern drawing to begin, as this is the first step to creating a quality leadlight". She says "From that point we circulate the class and help each student based on their immediate needs. There will also be group discussions where appropriate". Keep On Leadlighting and Copperfoil Lampshades classes run in Hamilton on Tuesday evenings starting 8 February and in Palmerston North on Wednesday evenings starting 9 February.

Di and Michelle are only part of the great teaching team though, and working with Di in Hamilton, is Janine Tate who will be tutoring Glass Mosaics this term. Janine is an extremely talented local artist who aptly incorporates painting into her Glass Mosaic and Copperfoil work. In Palmerston Nth, Donna Mason teams up with Michelle bringing 10 years of glass experience with her. Donna is a great asset to the company and teaches a range of our courses, loving to share her knowledge with keen students. Both Janine and Donna have work on display in our stores.

Editors Note

Happy New Year to you all!

There is no better time to start a new project, renew old interests or do something you have never done before....such as entering one or more pieces of your glass work in the Glass Art Competition. We are starting to receive entries - it's good to see that you have been busy over the break. Some of the categories do not have many entries though so please keep those coming. Have you run out of room to display your work? Would you like to display your glass work in our showrooms? We have the space and like to rotate quality glass works on a frequent basis. We often have people coming in search for a gift such as a suncatcher, lampshade or mosaic, so it is possible that you may sell an item if you wish to put a price on it. Please contact Di or Michelle to discuss displaying your work.

Our VIP glass special for the month of February and March is Wissmach clear obscures. Buy a studio sheet and receive a 30% discount. This is a huge saving for those large leadlight projects so come on in before stock runs out!

Good luck for the Glass Art Comp...Di

GRIPFLEX HAS ARRIVED!!

Leadlight Products and Glassworks now stock GRIPFLEX!! Gripflex will be replacing our Mosaic Isolatic Bond Two Part Adhesive. We have had trouble sourcing Isolatic Bond from our suppliers and have also received a couple of complaints from customers about its smell. So we decided to bring you what you want. Gripflex is mixed with water and has hardly any smell and glides on your form easier than the Isolatic Bond ever would. Gripflex is still flexible (as the name suggests) so larger pieces of glass will still be supported just as well if not better than the Isolatic Bond. Pots of 500grms are available for RETAIL \$8.95 VIP CARD HOLDER PRICE: \$8.05

Error on Hamilton Timetable

Please note that Glass Mosaics Direct is Wednesday evenings starting 9 March - not on Tuesdays as previously advertised in the 2005 Term 1 Timetable. Sorry for any confusion.

Glassworks Gears Up For Another Year

Welcome back for 2005.

Donna & I are gearing up for a very creative year.

Our first demo was held Tuesday 1st Feb and we have an exciting Term planned. The demand for classes is high so we have some new workshops offering something for everyone. Come in and check out the timetable. From Feb 17th to March 16th we are offering an in store demonstration of the fantastic new Taurus Ring Saw III; so pop in some time and get us to show you how this tool will make your life easier?!!

We still have a couple of spots left in Keep On Leadlighting for Wednesday 9th February, so to all our students that have done Start Up and Copper-foil suncatchers, now is your chance to make your own doors/windows/lamp shades with expert guidance. – Please phone for a timetable if you have misplaced your last one. We look forward to seeing you all.

kindest regards, Michelle



Michelle sent us this photo of Amanda (left) and Raewynn looking very pleased with results of their Start Up Leadlighting five week class, they were two of Donna's last students for 2004



From Right Sue, Lesley, Jill, Sam, Donna, Glass Mosaics Direct Students 2004 Great to see such magnificent creations



One of Michelle's Awesome Creations, surprising what you can do with a box of diamondcrete and a few off cuts of glass. This stepping stone pattern is from the book "Stained Glass Mosaics" instore Hamilton & Palmerston North



GLASS OF THE MONTH FOR FEB & MARCH

20% OFF WISSMACH CLEAR OBSCURES!!! 20% OFF WISSMACH CLEAR OBSECURES!!!



Hammered



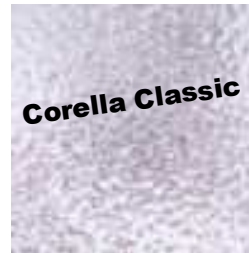
Ripple



English Muffle



Florentine



Corella Classic



Moss

Wissmach Clear Obscures are great for any kind of glass work, along with 20% off hobby square size we are also offering 30% off Studio Sheet size. Many more designs in store!!

LATHEKINS!!

25% off this versatile tool great for foiling and opening the channel of lead

Usually \$6.95



NOW: \$5.25

Large Clear Nuggets Special 500grm Bags 20% OFF

25% Aluminum Rulers

Please note that these specials are not offered in conjunction with any other offer shown instore Hamilton or Palmerston North